

# Welcome to the West Area Planning Committee

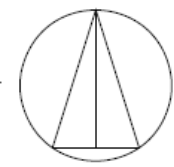
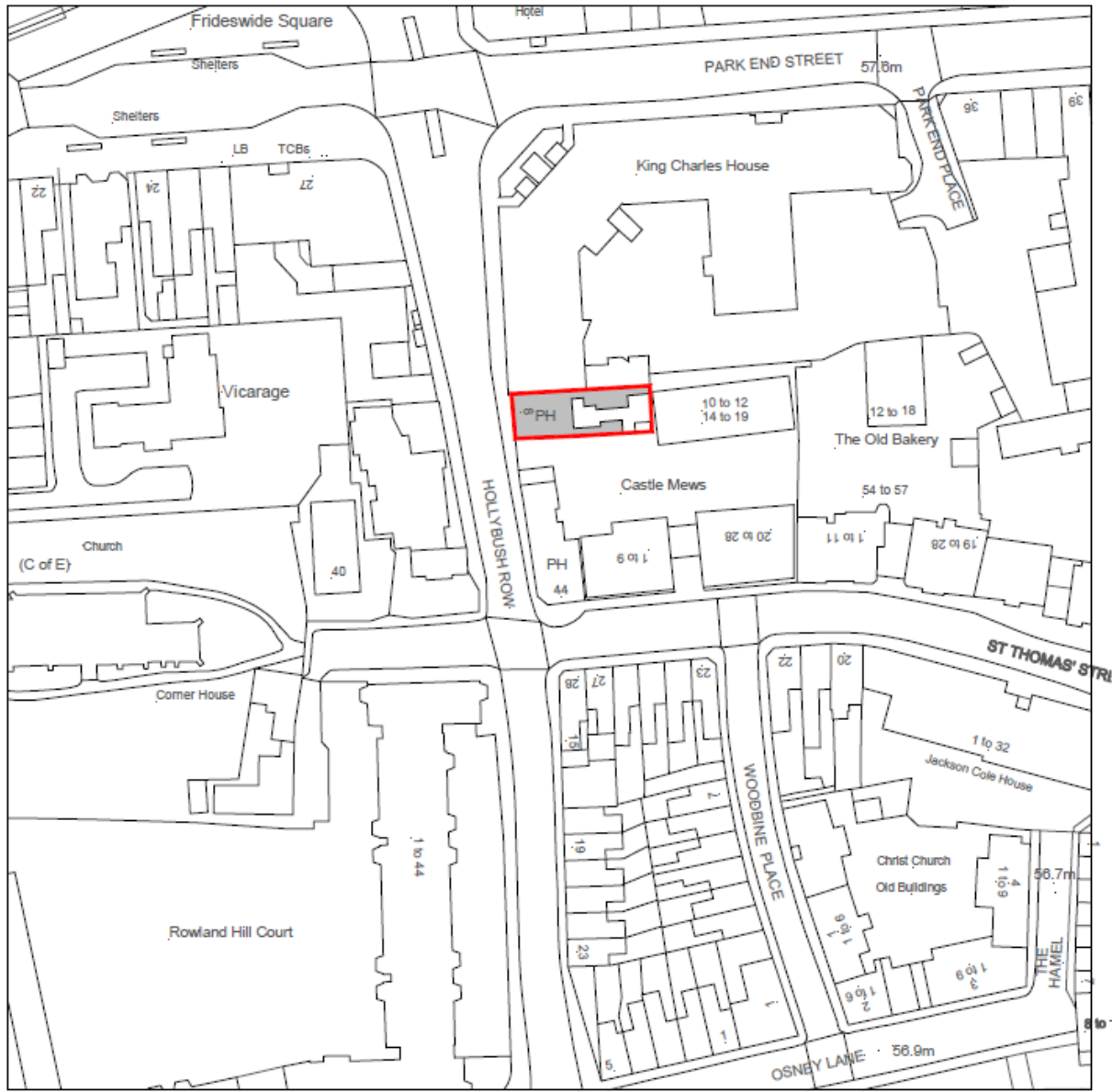
- This planning committee meeting is held in public but it is not a public meeting.
- There will be an opportunity for the public to address the committee on each application.
- If you wish to speak for or against a planning application, you need to have either requested it in advance, or hand in one of the available speaker forms, or speak to the clerk.
- Information on meeting protocol and conduct at the committee is set out in the Code of Practice.
- This is in the committee agenda just before the first planning application report.

# Site Location Plan

[www.oxford.gov.uk](http://www.oxford.gov.uk)



4



# Existing Front Elevation

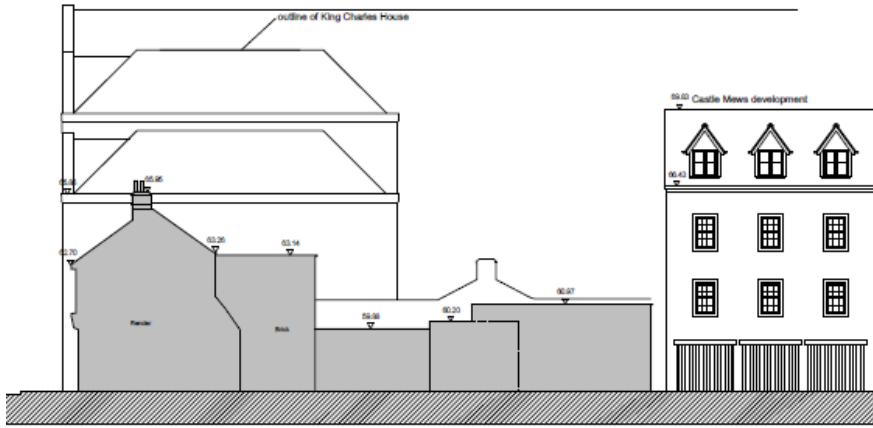


Existing Elevation to Hollybush Row Scale 1:200

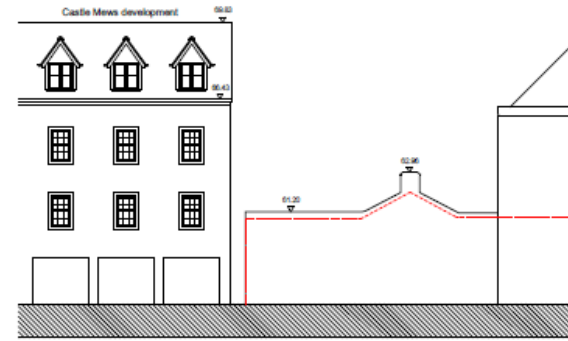
[www.oxford.gov.uk](http://www.oxford.gov.uk)



# Existing Side/Rear Elevations



Existing South Elevation



Existing North Elevation

9



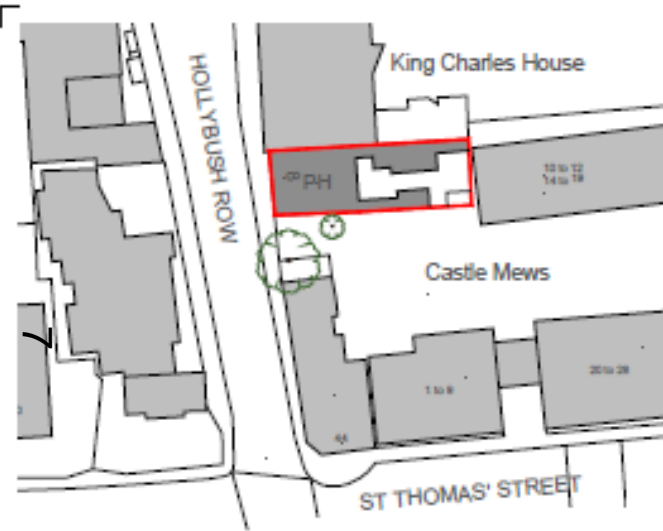
[www.oxford.gov.uk](http://www.oxford.gov.uk)



**OXFORD  
CITY  
COUNCIL**



# Existing Site Plan



# Proposed Site Plan



# Proposed Front Elevation



[www.oxford.gov.uk](http://www.oxford.gov.uk)

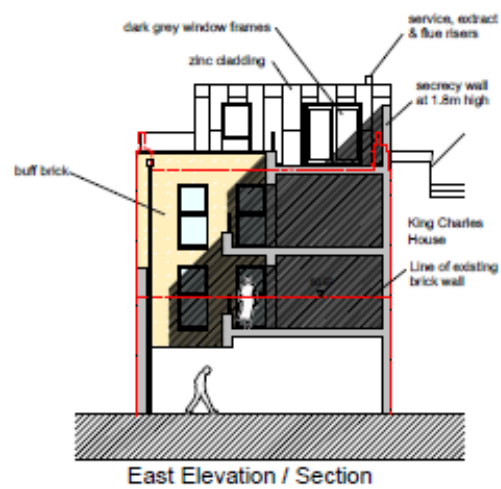
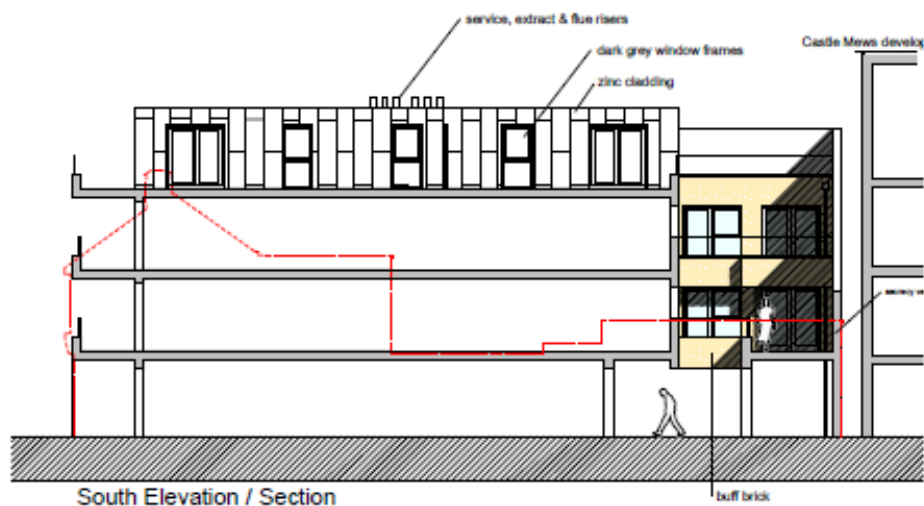
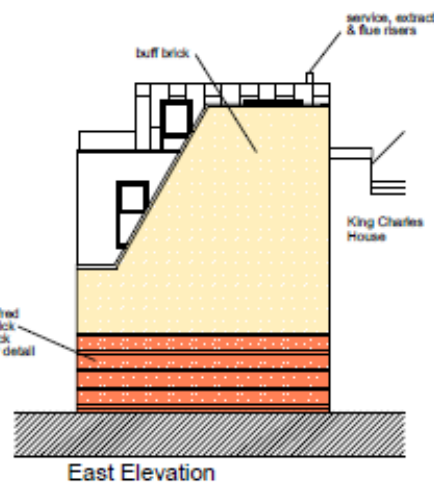
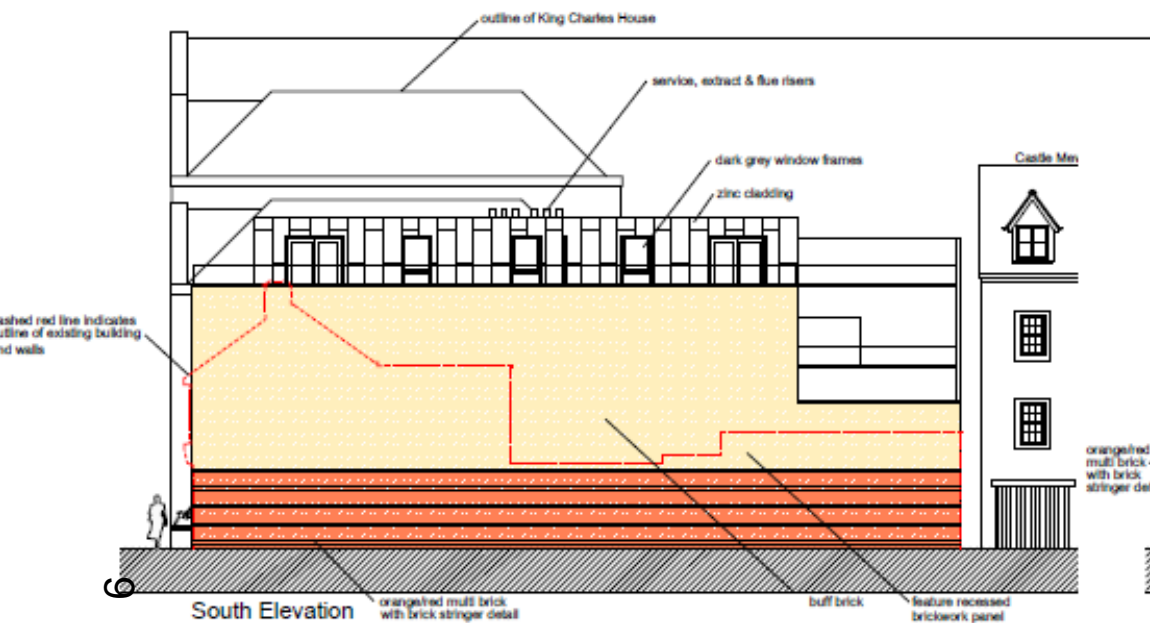


# Proposed Side/Rear Elevations

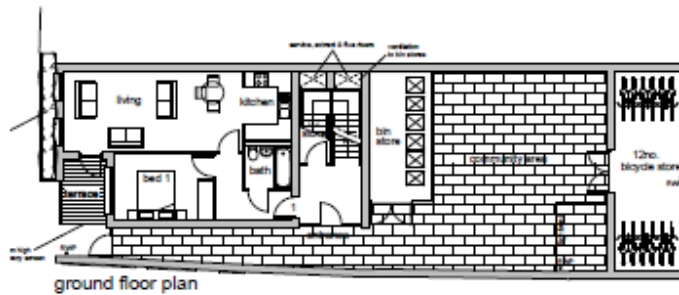
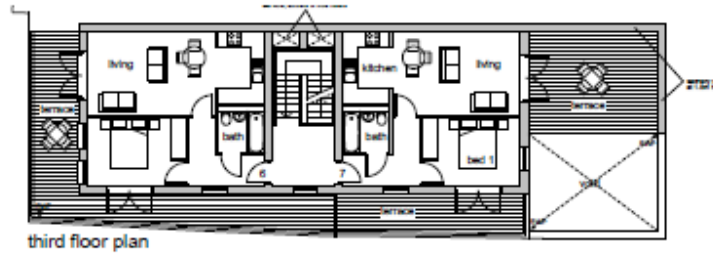
v.uk



**OXFORD  
CITY  
COUNCIL**



# Proposed Floor Plans



# Existing Floor Plans



[www.oxford.gov.uk](http://www.oxford.gov.uk)

